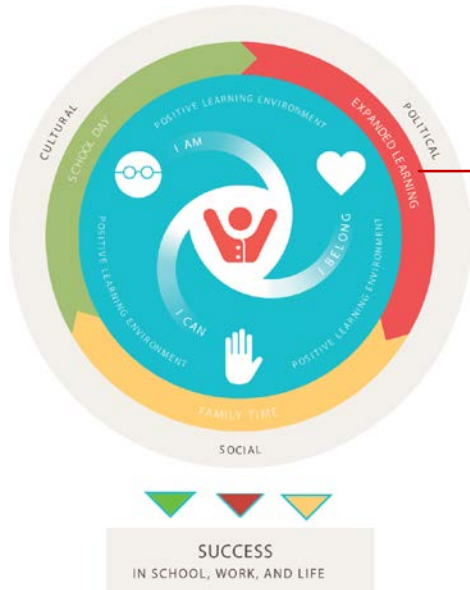



All children need social-emotional and character skills in order to thrive in school, work, and life.



Expanded Learning programs create a positive learning environment

and strongly support three foundational areas of Social-Emotional Learning and Character Building

| EXPANDED LEARNING 360°/365 FOUNDATIONAL AREAS: | | |
|---|-----------------|--|
|  | I AM | Self-awareness Self-management |
|  | I BELONG | Social awareness Interpersonal skills |
|  | I CAN | Self-efficacy Growth mindset |

CalSAC's FREE training modules help strengthen the capacity of OST and Expanded Learning Programs to support social-emotional learning and character development for staff and for youth.



A Professional Learning Community (PLC) gives participants an opportunity to dig deeper into the social-emotional learning and character development concepts and content as well as share their experiences and apply learning in between the scheduled training sessions. There are two PLC tracks available for both frontline and site coordinator level staff.

FREE

FREE

Step 1: Awareness Building

Two orientation sessions to set the foundational knowledge for both training tracks

- 4.6.1 Social Emotional Learning, Building Character and Enhancing Quality**
- 4.6.2 Going Deeper: Supporting Social-Emotional Learning and Character Skill**

Step 2: Site Leadership Track

Four training sessions designed to equip those in leadership positions to create an environment for adult staff to thrive

- 4.7.1 Leading with Head and Heart**
- 4.7.2 Supervising with Head and Heart**
- 4.7.3 Coaching with Head and Heart**
- 4.7.4 Leading Teams and Organizations with Head and Heart**

Step 2: Front Line Staff Track

Three training sessions focused on practices to support the three core skills areas

- 4.6.3 I AM: Supporting Self-Awareness and Self-Management**
- 4.6.4 I BELONG: Supporting Social-Awareness and Interpersonal Skills**
- 4.6.5 I CAN: Supporting Growth Mindset and Self-Efficacy**

We revised 30 of our most popular on-site training modules to incorporate social-emotional learning, character building and Quality Standards for Expanded Learning in California. These are available to request for FREE for your agency.



FREE

Working with Children and Youth

- ★ Developmental Trends 101
- ★ Building Relationships with Children and Youth
- ★ Effective Communication with Children and Youth
- ★ Building Self-Esteem in Children and Youth
- ★ Fostering Social Skills in Children and Youth
- ★ Professionalism
- ★ How and What to Observe in Children and Youth
- ★ Meeting the Needs of Children and Youth
- ★ Developmental Trends 101

Behavior Guidance

- ★ Understanding the Behavior of Children and Youth
- ★ Developing Problem Solving Skills
- ★ The Role of Staff in Behavior Guidance
- ★ Effective Supervision of Children and Youth
- ★ Including Children and Youth with Disruptive Behaviors
- ★ 9 Temperament Traits

Academic Enrichment

- ★ Homework Assistance

Delivering Quality Programs

- ★ Using Theme Webs for Curriculum Planning
- ★ Presentation Methods and Debriefing Strategies
- ★ Daily Schedules
- ★ Introduction to Evaluation
- ★ Evaluation – A self-study

Equity, Diversity, Inclusion and Anti-Oppression

- ★ Creating Respect and Safety
- ★ Going Deeper: Exploring Diversity
- ★ Exploring Privilege
- ★ Privilege, Power and the Ladder of Oppression
- ★ Exploring Cliques in Your Program
- ★ Becoming Allies with Children, Youth, and Families

Creating Culturally Sensitive and Equitable Programs

- ★ Cultural Competence: Identity, Diversity, and Engagement
- ★ Cultural Conflicts and Strategies
- ★ Promoting an Understanding of Cultural Sensitivity



Our new FREE social-emotional learning and character development modules can be accessed as standalone modules for on-site trainings or through our eLearning courses in place of the PLC model.

Visit our website at www.calsac.org to request the FREE on-site training modules

Find out more about our FREE eLearning modules at www.calsac.org/e_learning.org

For more information and to access training, please visit www.calsac.org or contact Selena Levy at slevy@calsac.org or (510) 444-4622 x108